



# COMF ELECTRONIC COMPANY

EXPORTERS, IMPORTERS & MANUFACTURERS

香港 九龍灣臨興街 32 號美羅中心 1 期 15 樓 11 室

Flat 11, 15/F, METRO CENTRE 1, 32 LAM HING ST.,  
KOWLOON BAY, HONG KONG

TEL: (852) 2770 5181

WEB: [www.comf-hk.com](http://www.comf-hk.com)





FAX (852) 2798 8129

Email: [sales@comf-hk.com](mailto:sales@comf-hk.com)

## Product Data Sheet CH29-2032

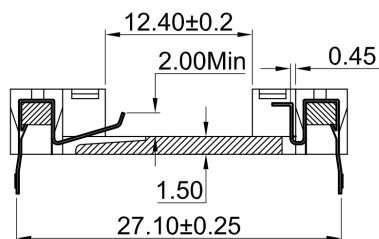
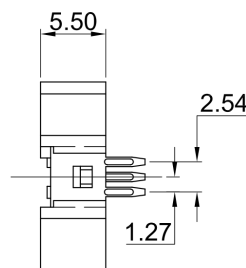
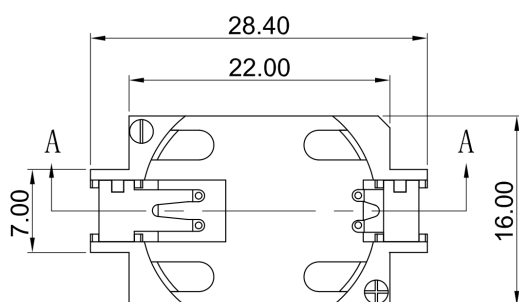


### Specification

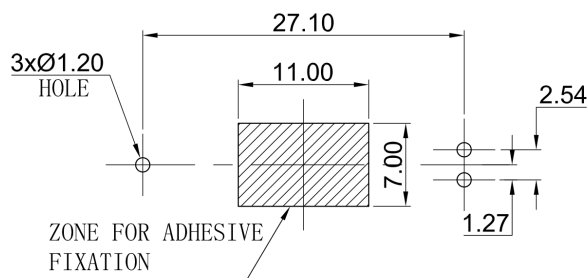
Cell Size:	1 X $\varnothing 20$ X 3.2mm Coin Cell (CR2032)
Body:	LCP + 30%GF UL 94V0, White
Terminals:	Tin plate over nickel, phosphor bronze
Temp Range:	-55°C to +85°C
Compliance:	   



CH29-2032



SECTION A-A



PCB/MOUNTING LAYOUT