



COMF ELECTRONIC COMPANY

EXPORTERS, IMPORTERS & MANUFACTURERS

香港 九龍灣臨興街 32 號美羅中心 1 期 15 樓 11 室

Flat 11, 15/F, METRO CENTRE 1, 32 LAM HING ST.,
KOWLOON BAY, HONG KONG

TEL: (852) 2770 5181

WEB: www.comf-hk.com





FAX (852) 2798 8129

Email: sales@comf-hk.com

Product Data Sheet BH-261D

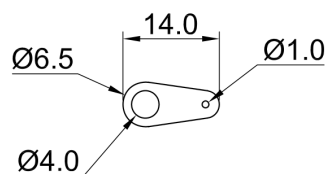
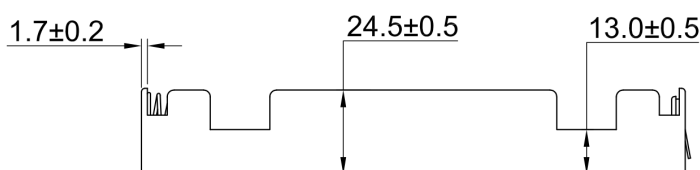
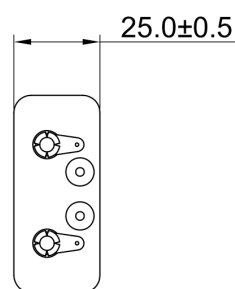
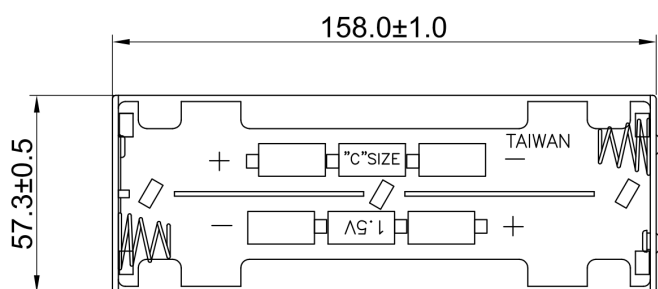


Specification

Cell Size:	6 X C Cells, UM-2, R14
Body:	Polypropylene 94HB, Black
Terminals:	Nickel plated brass
Springs:	Ø0.8mm Nickel plated 65C spring steel
Compliance:	   



BH-261A Shown Without Leads



SOLDER LUG