



# COMF ELECTRONIC COMPANY

EXPORTERS, IMPORTERS & MANUFACTURERS

香港 九龍灣臨興街 32 號美羅中心 1 期 15 樓 11 室

Flat 11, 15/F, METRO CENTRE 1, 32 LAM HING ST.,  
KOWLOON BAY, HONG KONG

TEL: (852) 2770 5181

WEB: [www.comf-hk.com](http://www.comf-hk.com)

FAX (852) 2798 8129

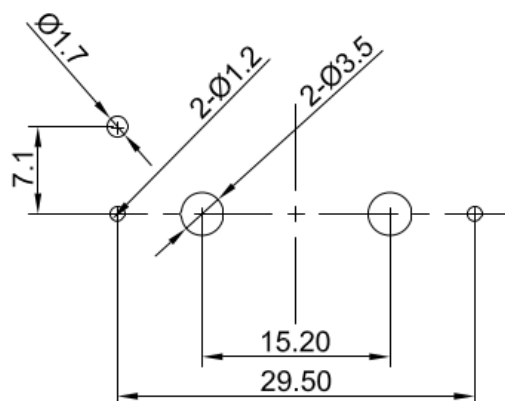
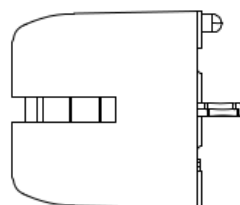
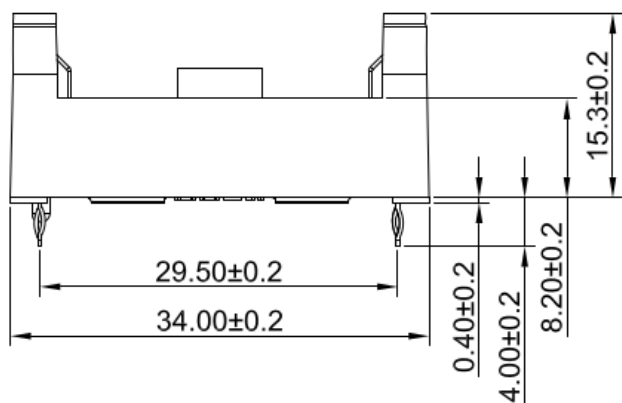
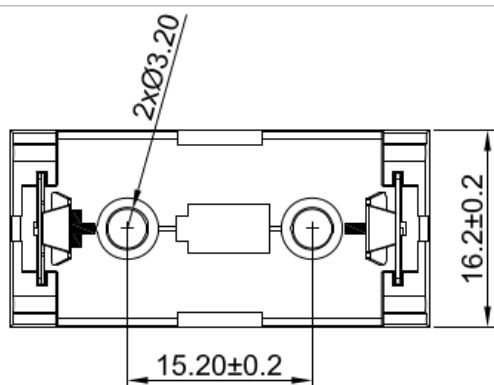
Email: [sales@comf-hk.com](mailto:sales@comf-hk.com)

## Product Data Sheet BHC-1/2AA-P



### Specification

Cell Size:	1 X ½ AA Cell	 BHC-1/2AA-P
Body:	PBT + 30% GF, Black With PCB THM Terminals and locating pin	
Terminals:	Nickel plated stainless steel	
Compliance:		



PCB LAYOUT